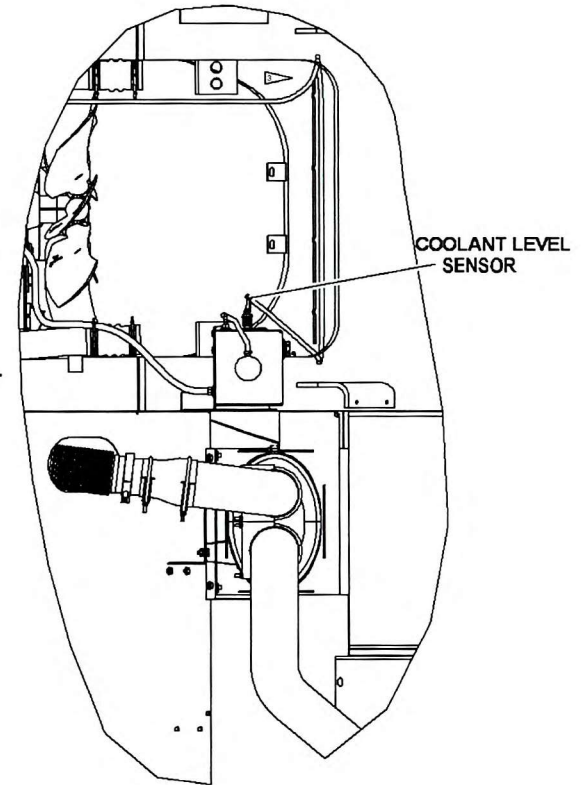
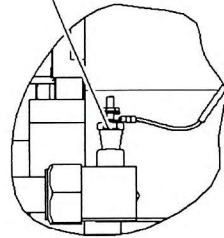


DETAIL E
FUSE/RELAY PANEL
BATTERY CONNECTIONS
(VIEW LOOKING FORWARD)



DETAIL F
SURGE TANK
COOLANT LEVEL SENSOR
(TOP VIEW)

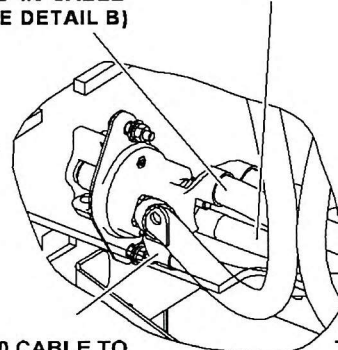
TRANSMISSION
TEMP SENDER
WIRE 25



DETAIL A

TRANSMISSION TEMP SENDER

1
2
RED 3/0 CABLE TO
POWER RELAY REF
(2) TO STARTER
RED 4/0 CABLE
(SEE DETAIL B)



DETAIL D

DISCONNECT SWITCH
CONNECTION
(VIEWED FROM REAR)

(1) RED 3/0 CABLE TO
BATTERY POSITIVE (+) REF
(1) RED 1/0 CABLE TO
250A FUSE REF

4
ALTERNATOR POSITIVE (+)
TO TOP FUSE (250A),
FUSE/RELAY PANEL
(SEE DETAIL E)

ALTERNATOR
CONNECTION
WIRE 596

5
ALTERNATOR NEGATIVE (-)
TO STARTER NEGATIVE (-)
1/0 BLACK CABLE
(SEE DETAIL B)

A/C CLUTCH
CONNECTION
(OPTIONAL)
WIRE 89

ALTERNATOR

A/C COMPRESSOR

9
(2) TO BATTERY
NEGATIVE (-)
4/0 BLACK CABLE
(SEE DETAIL E)

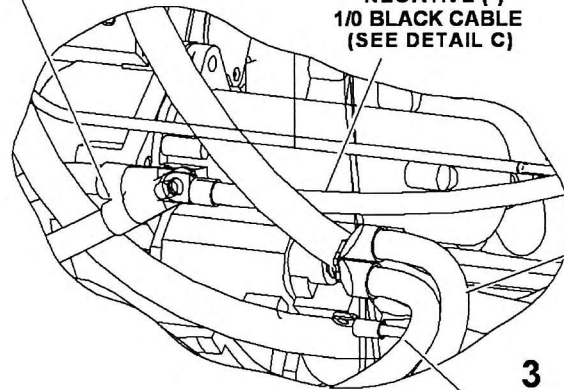
5
TO ALTERNATOR
NEGATIVE (-)
1/0 BLACK CABLE
(SEE DETAIL C)

7
TO BATTERY
NEGATIVE (-)
3/0 BLACK CABLE
(SEE DETAIL E)

1
2
(2) TO DISCONNECT
SWITCH
4/0 RED CABLE
(SEE DETAIL D)

8
TO FRAME GROUND
3/0 BLACK CABLE
(SEE LEFT SIDE VIEW
OF ENGINE COMPARTMENT)

ENGINE GROUND
CONNECTION
WIRE 345

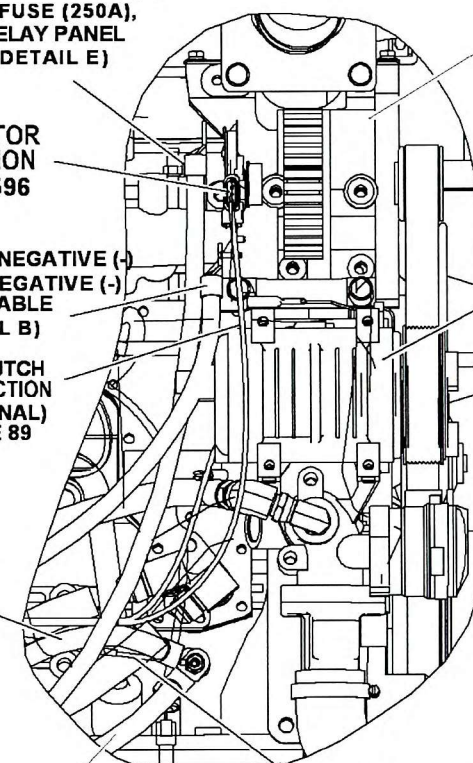


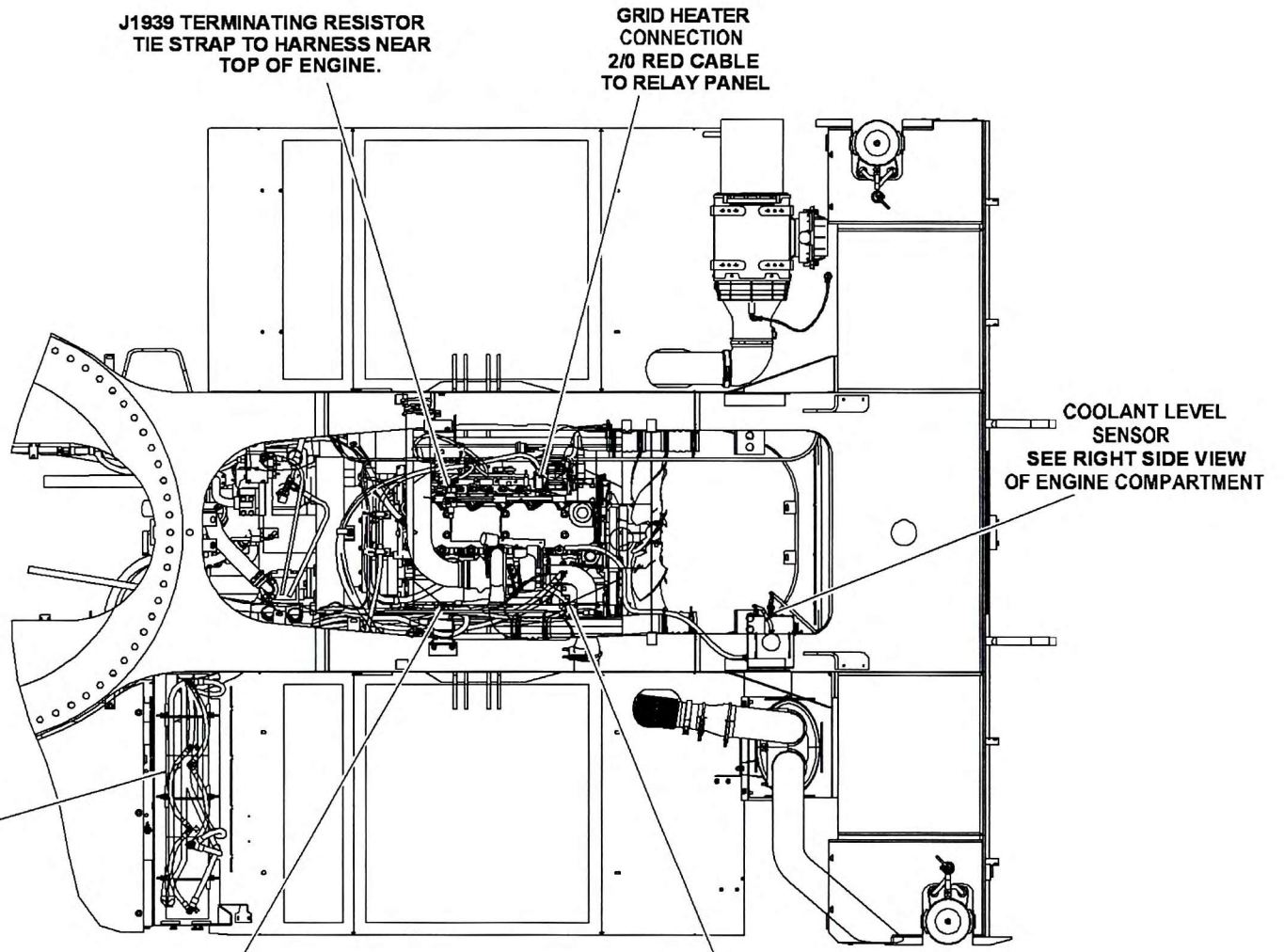
DETAIL B

STARTER CONNECTIONS

3
STARTER SOLENOID
POSITIVE (+)
#6 RED CABLE
TO RELAY PANEL
(SEE DETAIL E)

DETAIL C
ALTERNATOR, A/C CLUTCH
& ENGINE GROUND CONNECTIONS

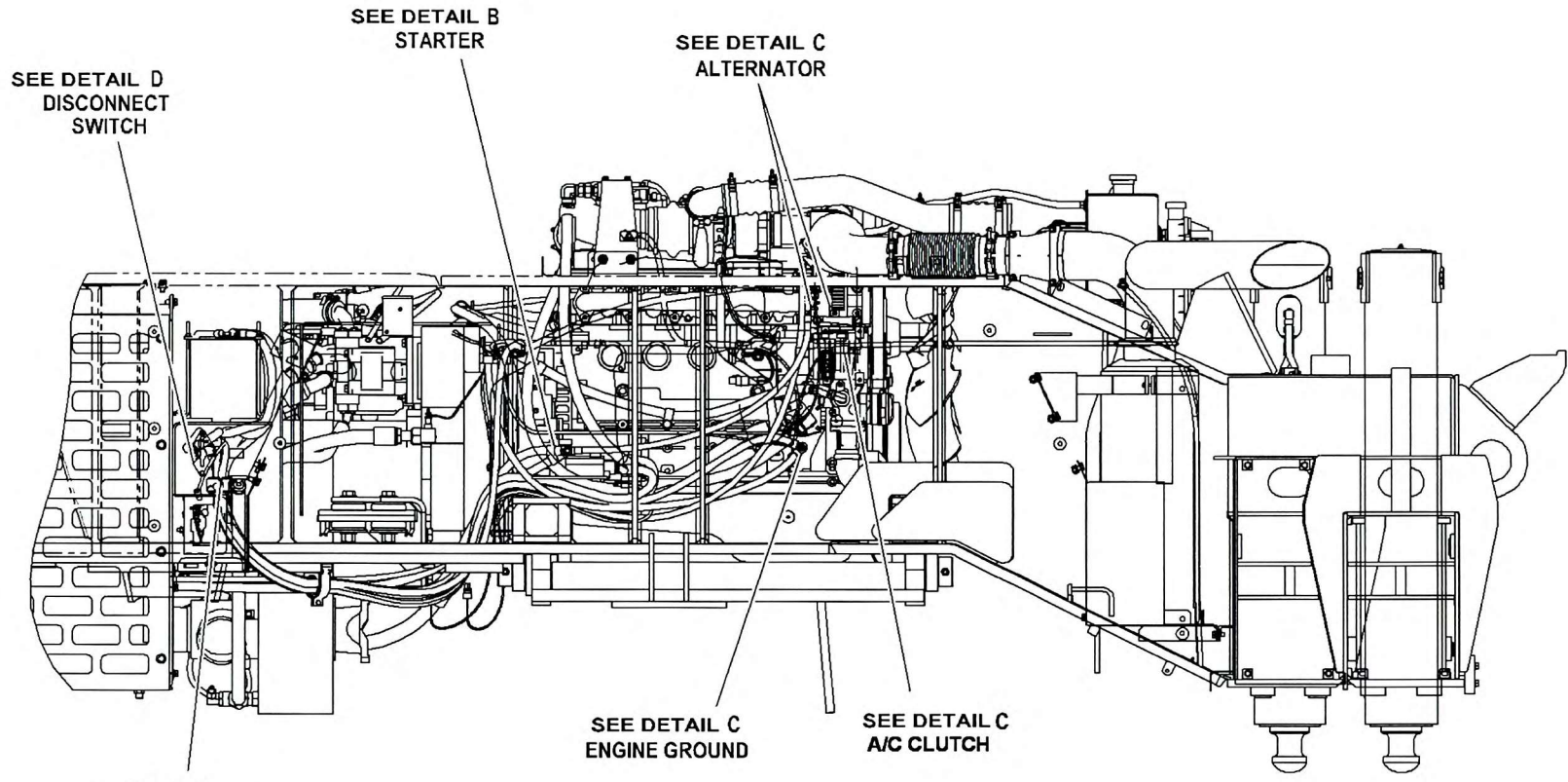




TOP VIEW OF ENGINE COMPARTMENT

← FORWARD

(SHEET 1 OF 4)



LEFT SIDE VIEW OF ENGINE COMPARTMENT
(LEFT FRAME RAIL NOT SHOWN FOR CLARITY)

← FORWARD